

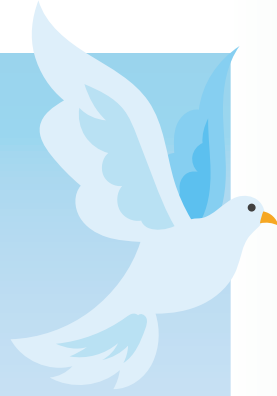


**ISASA**

Independent Schools Association of Southern Africa  
PENSION SCHEME AND PROVIDENT FUND

# Life

NEWSLETTER  
DECEMBER 2019



## VOLUNTARY FAMILY FUNERAL BENEFIT

Arranging a funeral for a loved one is difficult and stressful and many families need additional financial assistance to pay for this. The Voluntary Family Funeral Benefit not only helps you pay for the funeral but also provides a Support Service giving you total peace of mind.

## FUNERAL COVER FOR YOU AND YOUR FAMILY

The Voluntary Funeral Benefit ("Family Cover Policy") is available at a premium of R18.60 per member per month and offers funeral cover of up to R20 000. This is a valuable benefit that covers you and your immediate family members.

The benefit is paid to respective beneficiaries on submission of all required documents within 48 hours of a claim.

### ISASA FAMILY COVER – OLD MUTUAL

Primary Insured (Member)	R20 000
Insured Spouse	R20 000
Insured Child Aged older than 14	R20 000
Aged between 6 and 14	R10 000
Aged between 2 and 6	R5 000
Aged less than 2 and stillborn	R5 000

## PARTICIPATION

Current employees have the option of joining the Family Cover Policy when the school first joins the ISASA Pension Scheme or Provident Fund. **Thereafter, members may only join at the following review date, annually on 1 March.**

New employees will have the option to join the Family Cover Policy when they first join the school and thereafter also at the following review date on 1 March 2020 by asking the Bursar to be included in the scheme.

