

Niche Portfolio Range

Fund Fact Sheet - Institutional Investor

27Four Shariah Multi-Managed Balanced Fund

June 2017

Launch date
December 2014

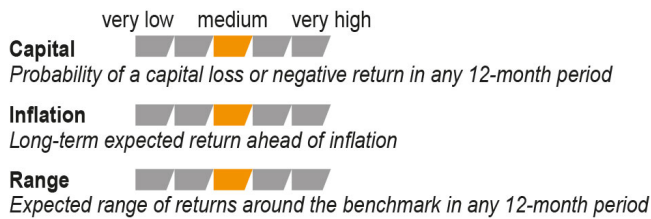
Fund size
R 8.7 million

Fund description
Combined - Multi asset class - Specialist

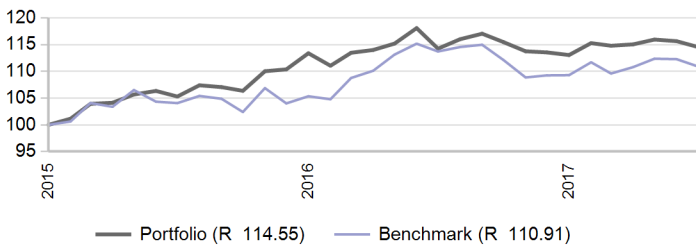
Portfolio description

A Shari'ah and Regulation 28 compliant balanced portfolio designed for members of a retirement fund wanting a Shari'ah compliant long-term investment option. The portfolio is diversified by asset class and fund manager and is designed to achieve moderate income and capital growth. The issuance of Murabahah contracts provides a synthetic income component to the fund.

Risk profile



Value of R 100 invested since inception



Manager weightings

Manager	Weight
27Four	100.0%
Total	100.0%

Risk stats over 1 Year

	Portfolio	Benchmark
Annualised standard deviation	5.1%	5.3%
Sharpe ratio	-1.3	-1.8
Maximum drawdown	4.3%	5.5%
Positive months	42.9%	57.1%

Benchmark allocation

Local asset class	Benchmark	Allocation
Equity	FTSE/JSE Shariah Capped Top 40	40.0%
Cash	STeFI Composite Index	30.0%
	Zero Return Benchmark	2.0%
Global asset class	Benchmark	Allocation
Equity	DJ Islamic Titans 100 Index	16.2%
	DJ Sukuk Index	5.0%
	Platinum Spot Benchmark	5.0%
	NSE Lotus Islamic Index	1.8%
Total		100.0%

Market summary

	1 Month	3 Months	1 Year	3 Years
FTSE/JSE All Share	-3.49%	-0.39%	1.69%	3.43%
FTSE/JSE SWIX	-3.83%	0.00%	0.28%	4.79%
FTSE/JSE Capped SWIX ALSI	-3.58%	-0.96%	-0.77%	4.19%
FTSE/JSE SA Property	0.29%	0.91%	2.82%	13.18%
All Bond Index	-0.95%	1.49%	7.93%	7.12%
STeFI Composite index	0.61%	1.85%	7.63%	6.92%
MSCI AC World	-0.26%	1.82%	6.08%	12.33%
Citi WGBI	-0.85%	0.47%	-14.39%	6.09%

Portfolio returns

	Portfolio	Benchmark
1 Month	-0.94%	-1.21%
3 Months	-0.43%	0.11%
YTD	1.33%	1.49%
1 Year	0.27%	-2.46%
Since Inception	5.40%	4.09%

Effective asset allocation exposure

Local	74.5%
Equity Excluding Property	32.5%
Basic Materials	11.9%
Consumer Goods	6.5%
Industrials	6.0%
Consumer Services	3.5%
Telecommunications	1.8%
Healthcare	1.5%
Technology	1.2%
Financials	0.1%
Energy	0.0%
Property	1.7%
Cash	31.5%
Commodities	7.0%
Balanced	1.7%
Global	24.9%
Equity Excluding Property	20.3%
Property	2.1%
Bonds	2.3%
Cash	0.2%
Africa	0.6%
Equity Excluding Property	0.6%

Top 10 equity holdings

Holding	%
QINVEST PGIM LIQUID REAL ESTATE FUND	2.1%
MONDI PLC	1.9%
SASOL	1.8%
ADVTECH	1.7%
NBAD SHARIAH MENA DIVIDEND LEADER FUND	1.4%
MONDI LTD	1.3%
STEINHOFF INTERNATIONAL HOLDINGS N.V.	1.2%
TENCENT HOLDINGS LI (CN)	0.9%
APPLE	0.9%
DATATEC	0.9%
% of total portfolio	14.2%

Top 10 fixed interest issuers

Issuer	%
MALAYSIA	0.3%
SAUDI ELECTRIC CO	0.2%
PERUSAHAAN PENERBIT SBSN INDONESIA III	0.2%
DIB SUKUK COMPANY LTD	0.1%
MAF SUKUK LTD	0.1%
EQUATE SUKUK SPC LTD	0.1%
SIME DARBY BHD	0.1%
HONG KONG SUKUK	0.1%
GEMS MEA SUKUK LTD	0.1%
QIB SUKUK LTD	0.1%
% of total portfolio	1.3%

FAIS notice and disclaimer

Alexander Forbes Investments Limited is a licenced financial services provider in terms of Section 8 of the Financial Advisory and Intermediary Services Act, 37 of 2002, as amended, FAIS licence number 711. This information is not advice as defined and contemplated in the Financial Advisory and Intermediary Services Act, 37 of 2002, as amended. Investment returns are calculated via Statpro Performance and Attribution. Past investment returns are not indicative of future returns. This product is not guaranteed. Please be advised that there may be representatives acting under supervision. Company Registration Number: 1997/000595/06. Pension Fund Administrator No.24/217. Long Term Insurance Act No. 00018/001. Postal address: P.O. Box 786055, Sandton 2146. Physical Address: 115 West Street, Sandown, 2196. Telephone number: +27 (11) 505 6000. The complaints policy and conflict of interest management policy can be found on the Alexander Forbes Investments website: <http://www.alexanderforbesinvestments.co.za>.

Notes

- Market data is sourced from Datastream. The FTSE/JSE Africa Index Series is calculated by FTSE International Limited ("FTSE") in conjunction with the JSE Securities Exchange South Africa ("JSE") in accordance with standard criteria. The FTSE/JSE Africa Index Series is the proprietary information of FTSE and the JSE. All copyright subsisting in the FTSE/JSE Africa Index Series index values and constituent lists vests in FTSE and the JSE jointly. All their rights are reserved.
- All holdings information is based on latest available data.
- There may be differences in totals due to rounding.
- All returns are before deduction of Alexander Forbes Investments' policy fees and performance fees, but net of other expenses. Returns for periods exceeding one year are annualized and all returns are quoted in Rands. Past investment returns are not indicative of future returns.